



Total Solution Provider in Saw Device

SA09226AD1

92.20 MHz IF SAW Filter
26.08 MHz Bandwidth
Revision 0: 16. July. 2010



- Electrical Characteristics
 - Package Dimensions
 - Testing Environment
 - Frequency Characteristics
-

SAWNICS Inc.

460 Cheonheung-ri, Seonggeo-eup, Cheonan-si, Chungcheongnam-do, 330-836 / Korea.
Tel: +82 41 550 9372 / Fax: +82 41 550 9399 / www.sawnics.com



□ Electrical Characteristics

Maximum Ratings

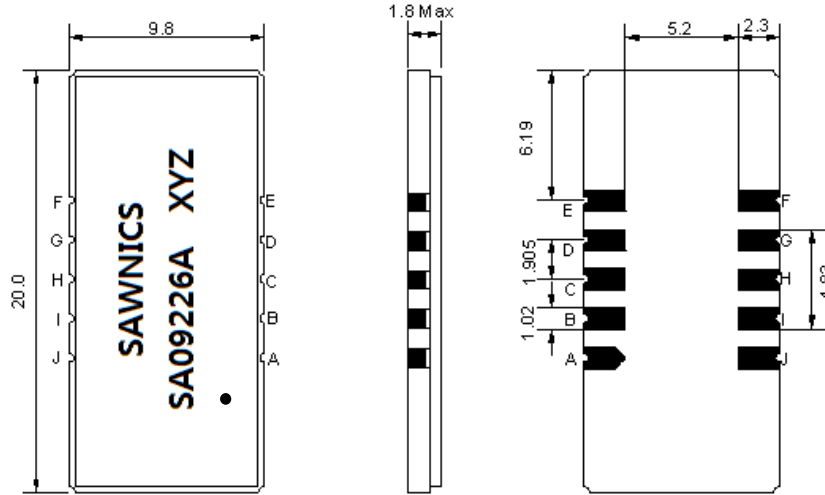
Parameters Description	Unit	Minimum	Typical	Maximum
Operation Temperature Range	°C	-	25	-
Storage Temperature Range	°C	-40	-	+85
Maximum DC Voltage	V	-	-	10
Maximum Input Power	dBm	-	-	10
Source Impedance (single ended) ⁽¹⁾	Ω	-	50	-
Load Impedance (single ended) ⁽¹⁾	Ω	-	50	-
Package type & size	D1			
Length x Width	mm ²	-	20.0 x 9.8	-
Height	mm	-	-	1.8

Electrical Specification

Parameters Description	Unit	Minimum	Typical	Maximum
Center Frequency (Fo)	MHz	-	92.20	-
Insertion Loss at Fo	dB	-	23.30	25.50
Group Delay Variation (Fo±12.80MHz)	nsec	-	40	80
Absolute Delay at Fo	usec	-	2.19	2.30
Passband Ripple Variation(Fo±12.80MHz)	dB	-	0.70	1.00
Bandwidth at -1dB	MHz	25.85	26.08	-
Bandwidth at -3dB	MHz	-	26.40	-
Bandwidth at -20dB	MHz	-	27.34	-
Bandwidth at -40dB	MHz	-	27.77	27.95
Ultimate Rejection	dB	50	55	-
Temperature Coefficient	ppm/°C	-	-72	-

Notes : (1) With Matching Network (Ref. Testing Environment Circuit as shown below).
Those impedances could be modified with different impedance values and/or structures, if necessary.

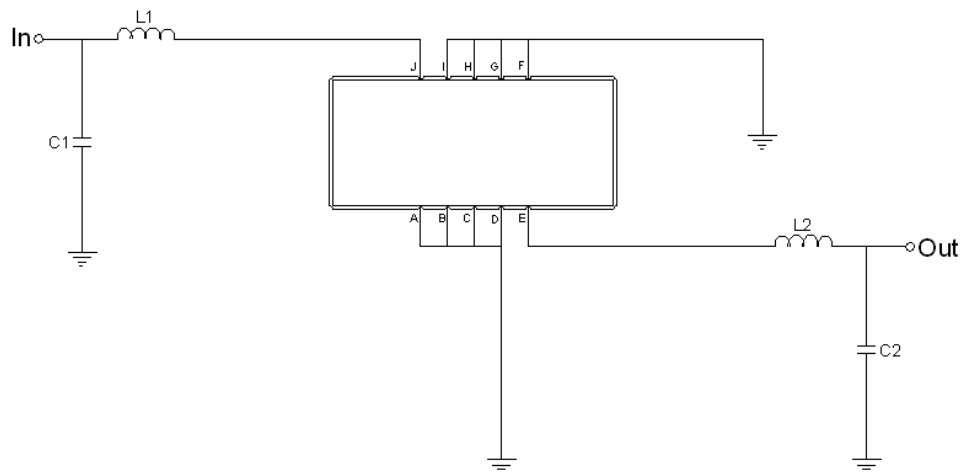
Package Dimensions



- ① SAWNICS: Brand
- ② SA09226A: Model Name
- ③ X : Date Code (Year)
- ④ Y : Date Code (Month)
- ⑤ Z : Date Code (Date)
- : Index Dot

Pin Description	
A, B, C, D, F, G, H, I	Ground
J	Input
E	Output

Testing Environment



Test Fixture & Values	
Input	L1 = 150 nH, C1=18 pF
Output	L2 = 120 nH, C2=16 pF
Source/Load Impedance	50 Ω

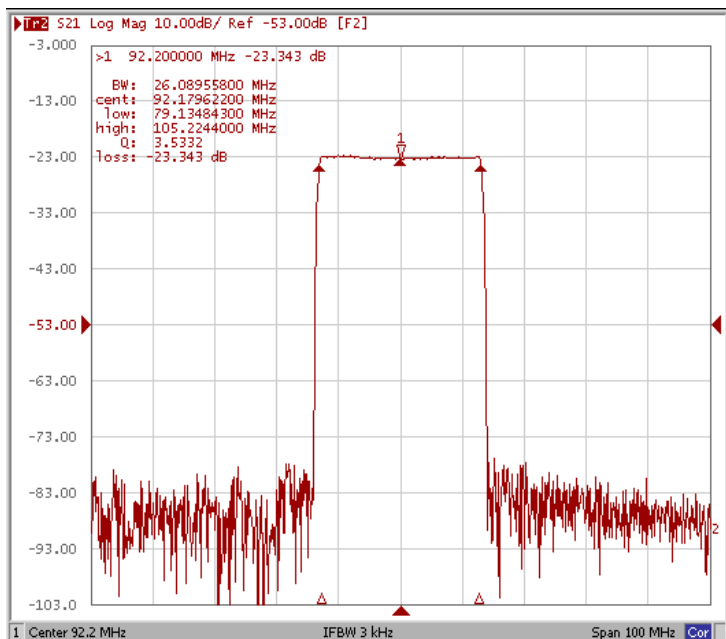


Frequency Characteristics

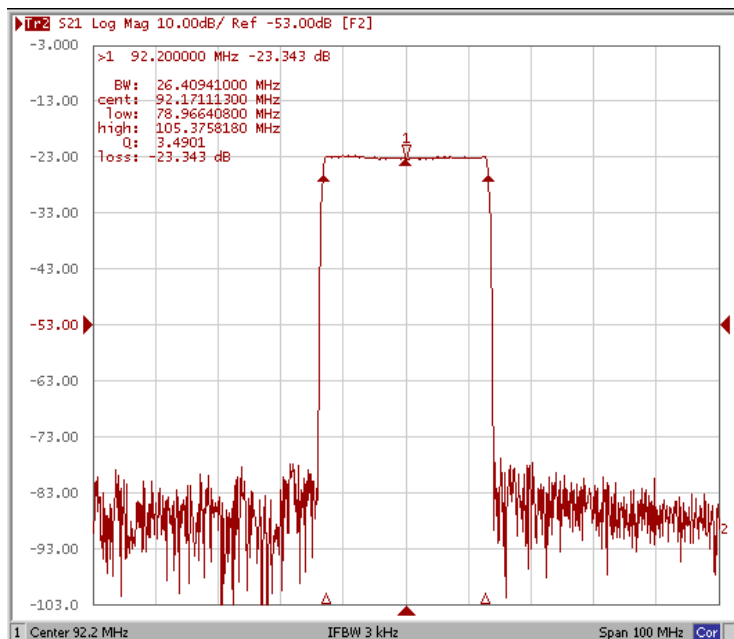
Frequency Response

Operating Temperature : +25 °C

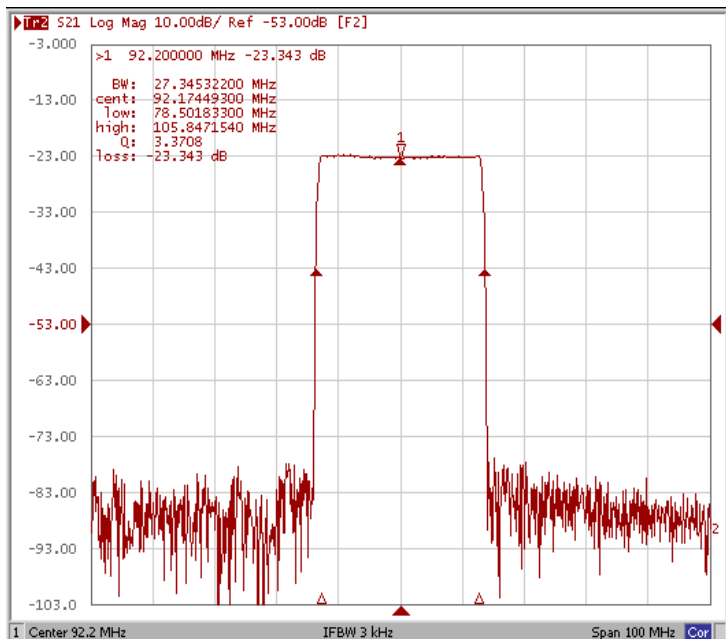
Bandwidth at -1.0 dB



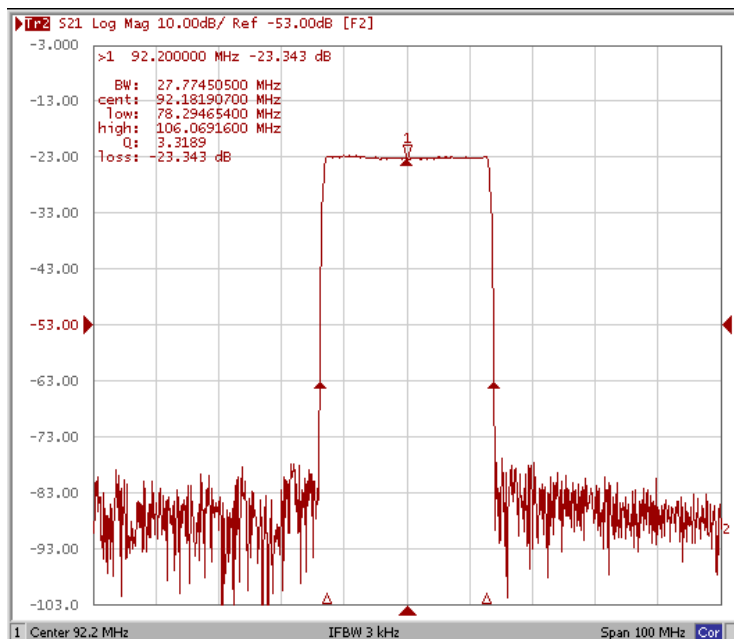
Bandwidth at -3.0 dB



Bandwidth at -20.0 dB



Bandwidth at -40.0 dB

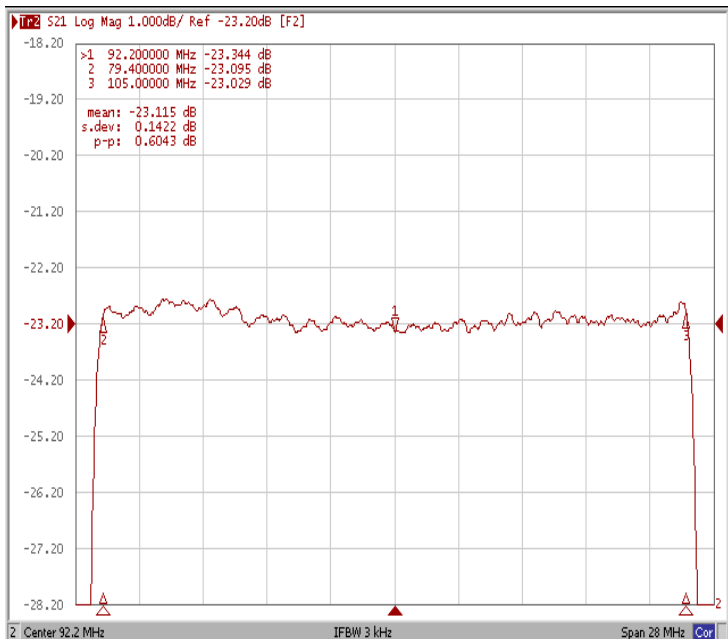




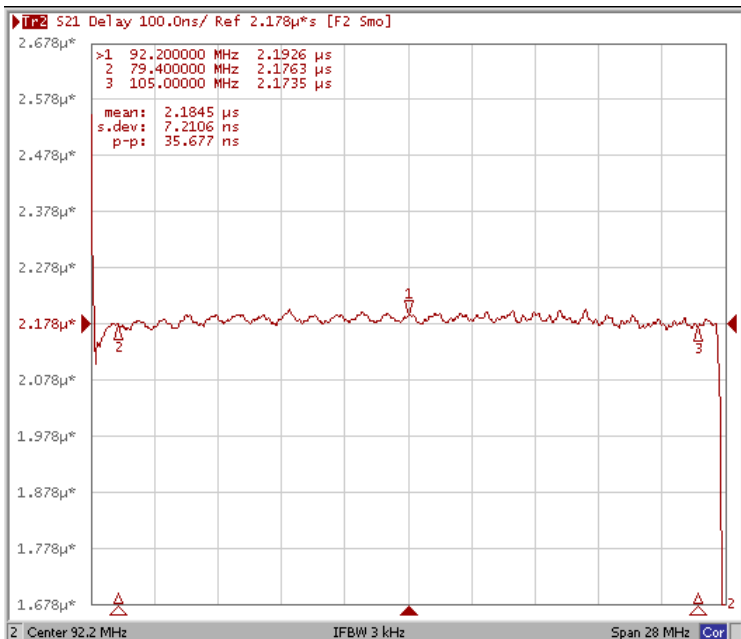
Frequency Characteristics

Frequency Response

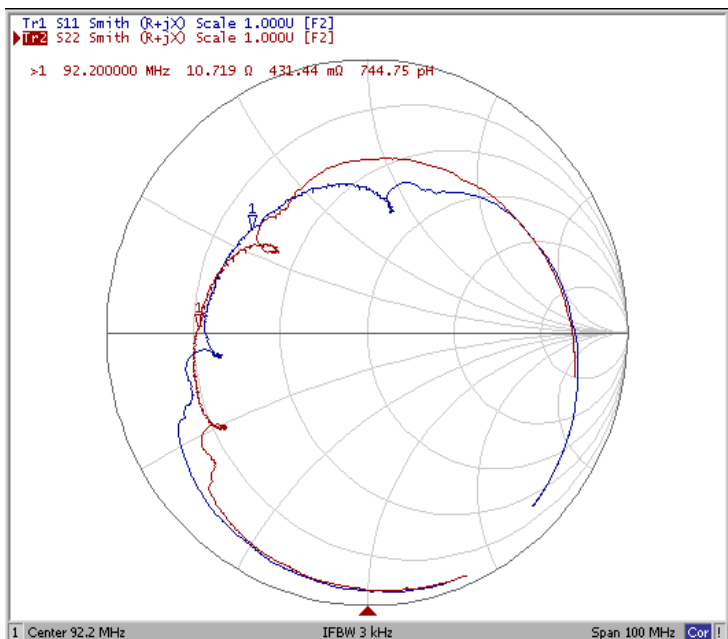
Ripple Variation Fo±12.80MHz



Group Delay Variation Fo±12.80MHz



Smith Chart



VSWR

